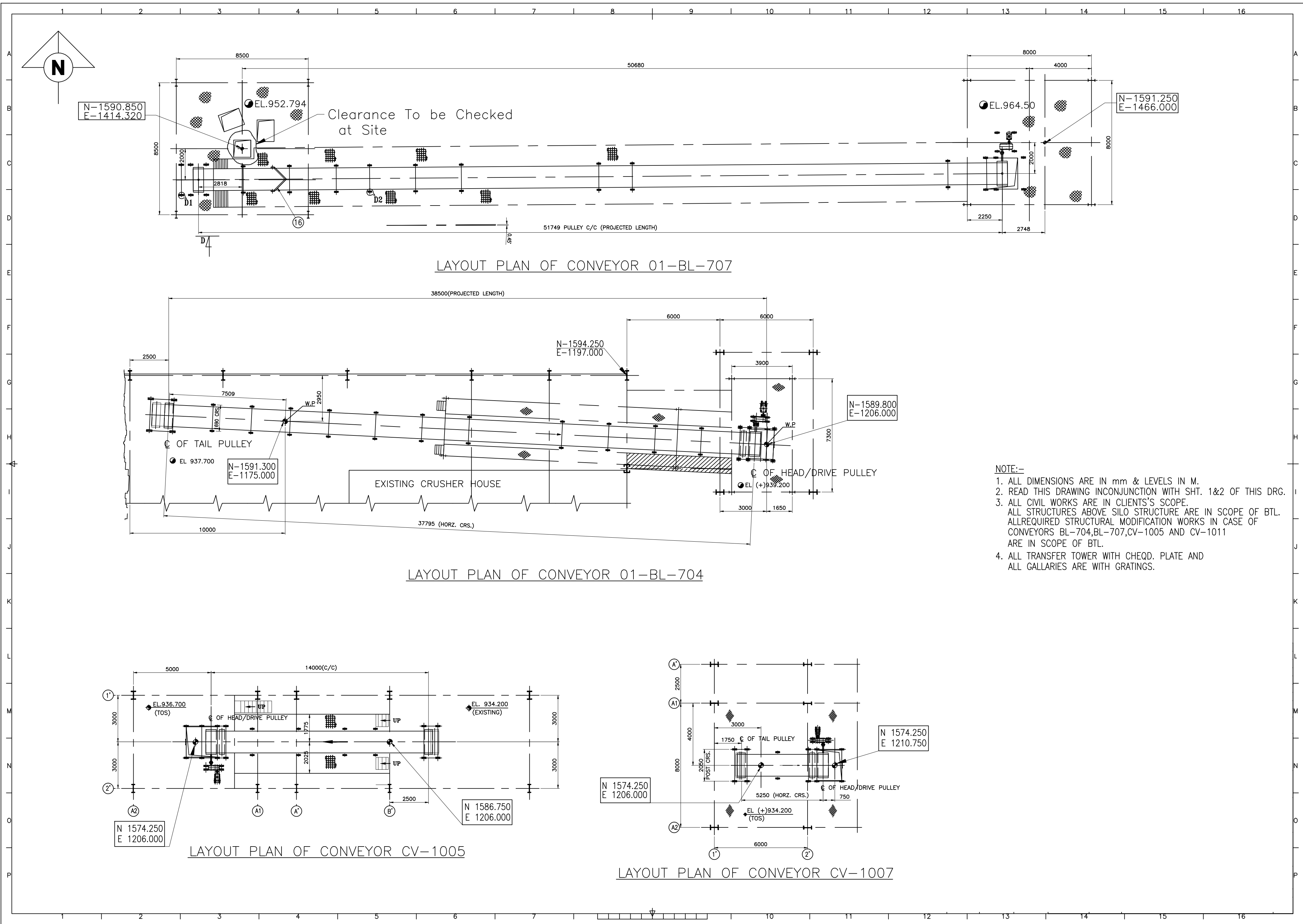


PLAN AT EL. 957.800 (AT SILO#5)

|          |   |             |             |                                      |
|----------|---|-------------|-------------|--------------------------------------|
| 23       | MODIFICATION OF FEED CHUTE AND SKIRT BOARD CHUTE FOR BL-704 | -           | 1           |                                      |
| 22       | BELT SCALES ON CV-1016 AND CV-1017                          | -           | 2           |                                      |
| 21       | 01-HC-MT-1001 3 POSITION FLAP GATE                          | -           | 1           |                                      |
| 20       | 01-DS-1001 DUST SUPPRESSION SYSTEM                          | -           | 1SET        | DRY FOG TYPE                         |
| 19       | 01-CH-1001 TO 4 ELECT. HOIST                                | 3 T         | 4           |                                      |
| 18       | 01-CV-1009 FEED CONVEYOR TO EXIST. SILO (B.W.-1400mm)       | 1200 TPH    | 1           |                                      |
| 17       | 01-CV-1012 SHUTTLE CONVEYOR (B.W.-1600mm)                   | 1200 TPH    | 1           |                                      |
| 16       | 02-CV-1017 BALL MILL FEED CONVEYOR (B.W.-1400mm)            | 330 TPH     | 1           |                                      |
| 15       | 02-CV-1016 BALL MILL FEED CONVEYOR (B.W.-1400mm)            | 330 TPH     | 1           |                                      |
| 14       | 02-CV-1015 BALL MILL FEED CONVEYOR (B.W.-1400mm)            | 330 TPH     | 1           |                                      |
| 13       | 01-CV-1011 NEW SILO FEED CONVEYOR (B.W.-1400mm)             | 1200 TPH    | 1           | EXISTING BL-710 CHUTE TO BE MODIFIED |
| 12       | 01-FG-1002B FLAP GATE                                       | -           | 1           |                                      |
| ITEM NO. | EQUIPT.NO.  | DESCRIPTION | DESIGN CAP. | QTY.                                 |
|          |   |             |             | REMARKS                              |

|          |              |                                       |             |      |                                      |
|----------|--------------|---------------------------------------|-------------|------|--------------------------------------|
| 11       | ---          | FEED CHUTE                            | -           | 1    |                                      |
| 10       | 01-FG-1002A  | FLAP GATE                             | -           | 1    | EXISTING BL-710 CHUTE TO BE MODIFIED |
| 9        | 01-CV-1008A  | SHUTTLE CONV. (B.W.-1400mm)           | 1200 TPH    | 1    |                                      |
| 8        | 01-CV-1008   | PH-2 SILO FEED CONVEYOR (B.W.-1400mm) | 1200 TPH    | 1    |                                      |
| 7        | ---          | CRUSHER DISCHARGE CHUTE               | -           | 1    |                                      |
| 6        | ---          | CRUSHER FEED CHUTE                    | -           | 1    |                                      |
| 5        | ---          | FINES DISCHARGE CHUTE                 | -           | 1    |                                      |
| 4        | ---          | SCREEN FEED CHUTE                     | -           | 1    |                                      |
| 3        | 01-CV-1007   | SCREEN FEED CONVEYOR (B.W.-1400mm)    | 1200 TPH    | 1    |                                      |
| 2        | 01-CV-1005   | SCREEN FEED CONVEYOR (B.W.-1400mm)    | 1200 TPH    | 1    |                                      |
| 1        | 01-HC-BL-704 | BELT CONVEYOR (B.W.-1400mm)           | 1200 TPH    | 1    | EXISTING CONVEYOR TO BE MODIFIED     |
| ITEM NO. | EQUIPT.NO.   | DESCRIPTION                           | DESIGN CAP. | QTY. | REMARKS                              |



LAYOUT PLAN OF CONVEYOR 01-BL-707

LAYOUT PLAN OF CONVEYOR 01-BL-704

LAYOUT PLAN OF CONVEYOR CV-1005

LAYOUT PLAN OF CONVEYOR CV-1007

- NOTE:-
1. ALL DIMENSIONS ARE IN mm & LEVELS IN M.
  2. READ THIS DRAWING INCONJUNCTION WITH SHT. 1&2 OF THIS DRG.
  3. ALL CIVIL WORKS ARE IN CLIENTS'S SCOPE.  
ALL STRUCTURES ABOVE SILO STRUCTURE ARE IN SCOPE OF BTL.  
ALL REQUIRED STRUCTURAL MODIFICATION WORKS IN CASE OF CONVEYORS BL-704,BL-707,CV-1005 AND CV-1011 ARE IN SCOPE OF BTL.
  4. ALL TRANSFER TOWER WITH CHEQD. PLATE AND ALL GALLERIES ARE WITH GRATINGS.