



Magnets for shop & trade fair construction



Function

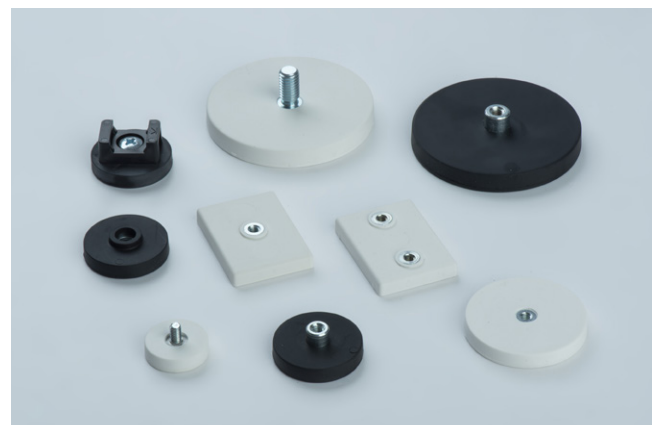
A wide range of magnetic solutions can be recommended for giving your trade fair booth or shop a decorative, clear-cut design. Our practical, re-usable magnets draw attention to your products and help you present and organize, all without drilling or leaving behind any residues.

Benefits

- Secure mounting through high holding forces
- Decorative
- Discrete
- Re-usable
- Simple handling
- No drilling necessary
- Doesn't leave behind residues
- Gentle on surfaces

Products

Rubber coated flat holding magnets ensure secure, discrete fixing of items and installation objects on ceilings, walls, and other construction elements. These powerful magnet systems are slip resistant and protect sensitive surfaces from being scratched thanks to their rubber casing. Available in black or white, they can be equipped with a threaded bush, external thread, cylinder bore, internal thread, or cable supports depending on the application. These magnets are ideal for fixing your goods, posters, price tags, or cables on sensitive surfaces.





As the name suggests, **decoration magnets** help you present products, images, and information boards in your store or at your trade fair booth in a secure and decorative fashion. Depending on application and on your personal preference, you can find the magnet that is best suited for you. Ferrite flat holding magnet

painted white with hook or decoration magnet with white, round plastic housing and hooks or eyelets – both versions are discreet thanks to their color and ensure sufficient holding force to fasten the desired objects.



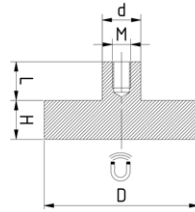
With their special sandwich construction in a pole shoe shape, **sandwich magnets** feature a relatively high holding force. These magnets made of ferrite are situated in a white rectangular or square plastic housing equipped with a hook or eyelet. Sandwich magnets are the right choice for applications requiring angle-

shaped, subtle fastening with a high holding force. Designed specifically for fixing poster frames, these sandwich magnets are offered with an adapter holder available in 5 different versions.

Product range

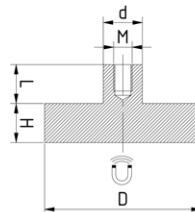
Immediately available

Pot magnet made of NdFeB with threaded bush, white rubber coated



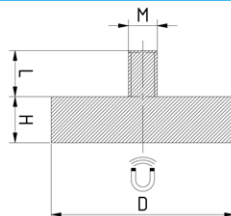
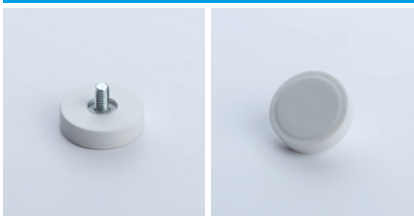
Part number	D mm	H mm	L mm	d mm	Thread M	Shear force N	Holding force N	Weight g	Temperature °C
M40015300B299U	22	6	5.5	8	M4	15	58	13	60
M40015400B299U	31	6	5.5	8	M4	29	89	23	60
M40015500B299U	43	6	4.5	8	M4	25	100	30	60
M40015600B299U	66	8.5	6.5	10	M5	75	250	105	80
M40015700B299U	88	8.5	8.5	12	M8	125	550	192	80

Pot magnet made of NdFeB with threaded bush, black rubber coated



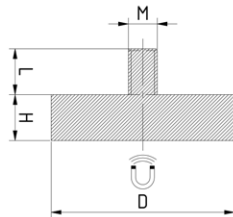
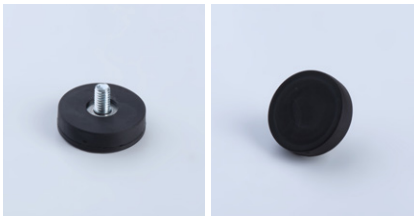
Part number	D mm	H mm	L mm	d mm	Thread M	Shear force N	Holding force N	Weight g	Temperature °C
M17218000B293U	22	6	5.5	8	M4	18	58	13	60
M40011700B292N	31	6	9.5	8	M4	25	89	20	60
M17114000B293N	43	6	8	8	M4	30	100	32	60
M17114100B293N	66	8.5	11.5	10	M5	85	250	114	60
M17114200B293N	88	8.5	13.5	12	M8	140	550	209	60

Pot magnet made of NdFeB with external thread, white rubber coated



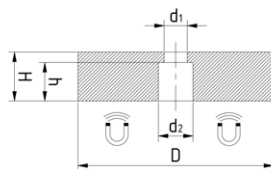
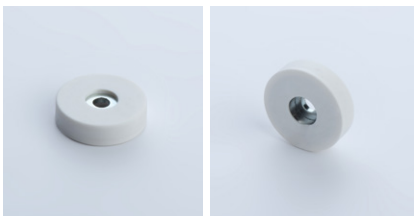
Part number	D mm	H mm	L mm	Thread M	Shear force N	Holding force N	Weight g	Temperature °C
M40015800B298U	22	6	6.5	M4x6.5	15	58	11	60
M40015900B298U	43	6	15	M6x15	25	100	32	80
M40016000B298U	66	8.5	15	M8x15	75	250	107	80
M40016100B298U	88	8.5	15	M8x15	125	550	193	80

Pot magnet made of NdFeB with external thread, black rubber coated



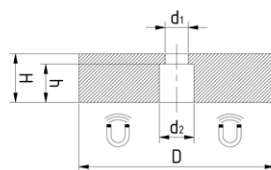
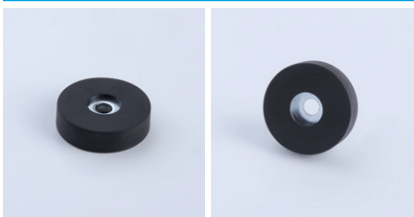
Part number	D mm	H mm	L mm	Thread M	Shear force N	Holding force N	Weight g	Temperature °C
M40011800B293N	22	6	6.5	M4x6.5	18	58	11	60
M40011900B293N	43	6	15	M6x15	30	100	35	60
M17115100B978N	66	8.5	15	M8x15	85	250	107	60
M40012000B293N	88	8.5	15	M8x15	140	550	209	60

Pot magnet made of NdFeB with cylinder bore, white rubber coated



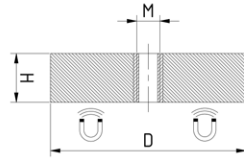
Part number	D mm	H mm	h mm	d1 mm	d2 mm	Shear force N	Holding force N	Weight g	Temperature °C
M40016200B296U	22	6	3.5	4	8.2	12	38	8	60
M40016300B296U	31	6	3.5	6	9	15	89	20	60
M40016400B296U	57	7.6	3.3	8	25.3	68	200	77	60
M40016500B296U	66	8.5	3.2	5.5	22	75	250	100	80

Pot magnet made of NdFeB with cylinder bore, black rubber coated



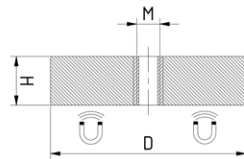
Part number	D mm	H mm	h mm	d1 mm	d2 mm	Shear force N	Holding force N	Weight g	Temperature °C
M40004300B296N	22	6	3.5	4	8.2	15	38	8	60
M40004400B296N	31	6	3.5	6	9	25	89	20	60
M40004600B296N	57	7.6	3.3	8	25.3	78	200	77	60
M40004700B296N	66	8.5	3.2	5.5	22	85	250	100	80

Pot magnet made of NdFeB with internal thread, white rubber coated



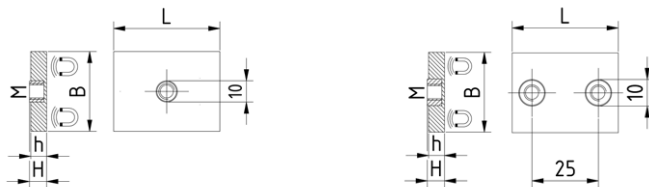
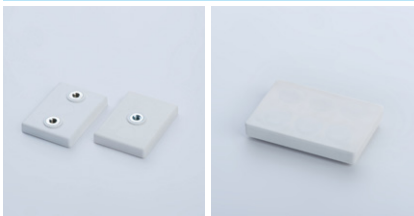
Part number	D mm	H mm	Thread M	Shear force N	Holding force N	Weight g	Temperature °C
M40016600B297U	22	6	M4	12	38	9	60
M40016700B297U	31	6	M5	18	89	22	60
M40016800B297U	43	6	M4	25	100	29	60
M40016900B297U	66	8.5	M6	75	250	100	80
M40017000B297U	88	8.5	M6	125	550	186	80

Pot magnet made of NdFeB with internal thread, black rubber coated



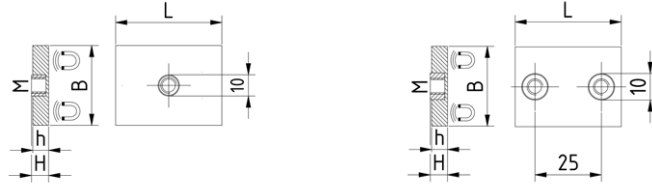
Part number	D mm	H mm	Thread M	Shear force N	Holding force N	Weight g	Temperature °C
M17284900B973U	22	6	M4	15	38	9	60
M17185000B973N	31	6	M5	25	89	18	60
M40012100B292N	43	6	M4	30	100	31	60
M40012200B292N	66	8.5	M6	85	250	105	60
M40012300B292N	88	8.5	M6	140	550	204	60

Pot magnet made of NdFeB with internal thread, rectangular, white rubber coated



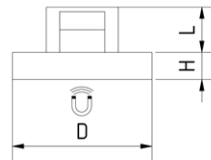
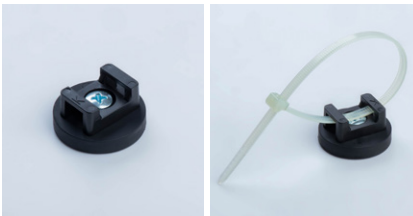
Part number	L mm	B mm	H mm	h mm	Thread M	Shear force N	Holding force N	Weight g	Temperature °C
M40017100B297U	43	31	6.9	6	1x M4x4.5	33	105	27	60
M40017200B297U	43	31	6.9	6	2x M4x4.5	52	146	28	60

Pot magnet made of NdFeB with internal thread, rectangular, black rubber coated



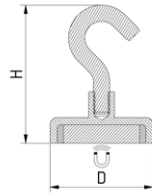
Part number	L mm	B mm	H mm	h mm	Thread M	Shear force N	Holding force N	Weight g	Temperature °C
M17397000B975U	43	31	6.9	6	1x M4x4.5	45	105	27	60
M40004800B297N	43	31	6.9	6	2x M4x4.5	57	146	28	60

Pot magnet made of NdFeB with cable holder, black rubber coated



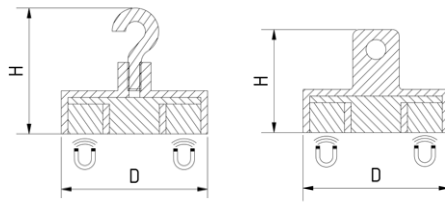
Part number	D mm	H mm	L mm	Shear force N	Holding force N	Weight g	Temperature °C
M40017300B299U	22	6.2	9.8	15	38	12	60
M40017400B299U	31	6.2	9.8	19	89	26	60
M40017500B299U	43	6.2	9.8	38	100	30	60

Decoration magnet made of ferrite with hook, white painted



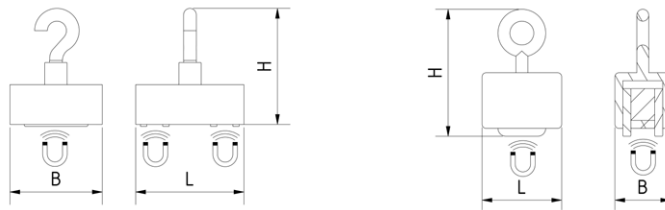
Part number	D mm	H mm	Thread M	Holding force N	Weight g
M17073600B229U	20	25.6	M3	30	12
M17073800B229U	32	30.5	M4	80	34
M17074000B229U	40	30.8	M4	125	59
M17074200B229U	50	32.7	M4	220	107
M17074400B229U	63	36.8	M4	350	232

Decoration magnet made of ferrite, white plastic housing with hook or eyelet



Part number	D mm	H mm	Holding force N	Weight g	Version
M40018800B229U	43	37	120	84	Hook
M40018900B229U	43	31	120	81	Eyelet

Sandwich magnet made of ferrite, rectangular or square white plastic housing with hook or eyelet

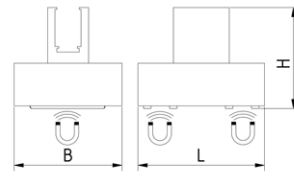


Part number	L mm	B mm	H mm	Holding force N	Weight g	Version
M17071500B277U	53	27.5	28	180	53	Hook
M40017600B229U	34	29	35	100	35	Hook
M40017700B229U	42	14	37	55	30	Hook
M40017800B229U	57	15	39	115	54	Hook
M40017900B229U	19	14	30	20	12	Eyelet
M40018000B229U	58	58	41.5	300	130	Eyelet

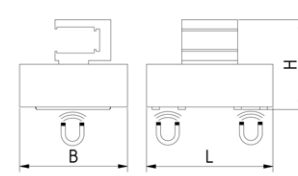
Sandwich magnet made of ferrite, white plastic housing with different adapter holders for poster frames



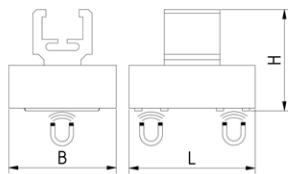
M40018100B229U



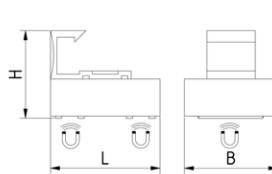
M40018200B229U



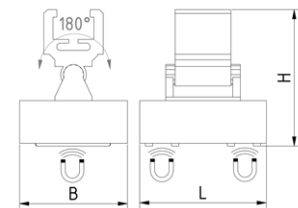
M40018300B229U



M40018400B229U



M40018500B229U



Part number	L mm	B mm	H mm	Holding force N	Weight g	Version
M40018100B229U	34	29	27.5	100	34	Adapter vertical, narrow opening
M40018200B229U	34	29	24.5	100	34	Adapter horizontal, narrow opening
M40018300B229U	34	29	27	100	34	Adapter vertical, wide opening
M40018400B229U	34	29	28	100	35	Adapter horizontal, wide opening
M40018500B229U	34	29	38.5	100	36	Adjustable adapter 180°

- ☞ Contact us if you need other dimensions, shapes, or colors. Other versions are also quickly available on request.
- ☞ In addition to our standard program, we also offer custom solutions. We will be happy to advise you on this.

General information

The statements are in no way to be deemed as an advisory service of our company, but are only descriptive without guaranteeing or granting property-related qualities. Liability on the basis of the statements of this product information is specifically excluded, unless compelling legal liability facts are evident. All information is correct to the best of our knowledge, but no responsibility will be taken for any errors. We reserve the right to make technical changes. Reproduction in any form, including extracts, only with the express permission of thyssenkrupp Magnettechnik.

 **Contact**

thyssenkrupp Magnettechnik
 Branch of thyssenkrupp Schulte GmbH
 Johanniskirchstr. 71
 45329 Essen, Germany
 T: 0800 624 6387 (from Germany), +49 201 946161-558 (international)
 F: +49 201 946161-555
www.thyssenkrupp-magnettechnik.com
magnet@thyssenkrupp-materials.com