



Stainless Steel Ball Valve

Pro Line Series, 2-piece (tk-BP200HT)

Technical specifications

Design

2-piece, maintenance-free, full bore,
High-temperature version

Features

- Operating temperature max. 250 °C
- Blow-out-proof stem
- Relief bore in ball
- Lockable lever in OPEN and CLOSED positions

Operation

Lever, turnable 90° (displaceable 90° against the stem)

Connection

Internal thread acc. to DIN EN 10226 (DIN 2999)

Dimensions

➞ Dimension Table

Operating parameters

Operating temperature -20 °C to +250 °C
Pressure rating PN63

➞ Pressure-Temperature Diagram



Materials

Body: Stainless steel 1.4408

Ball: Stainless steel 1.4408 (ASTM A351-CF8M)

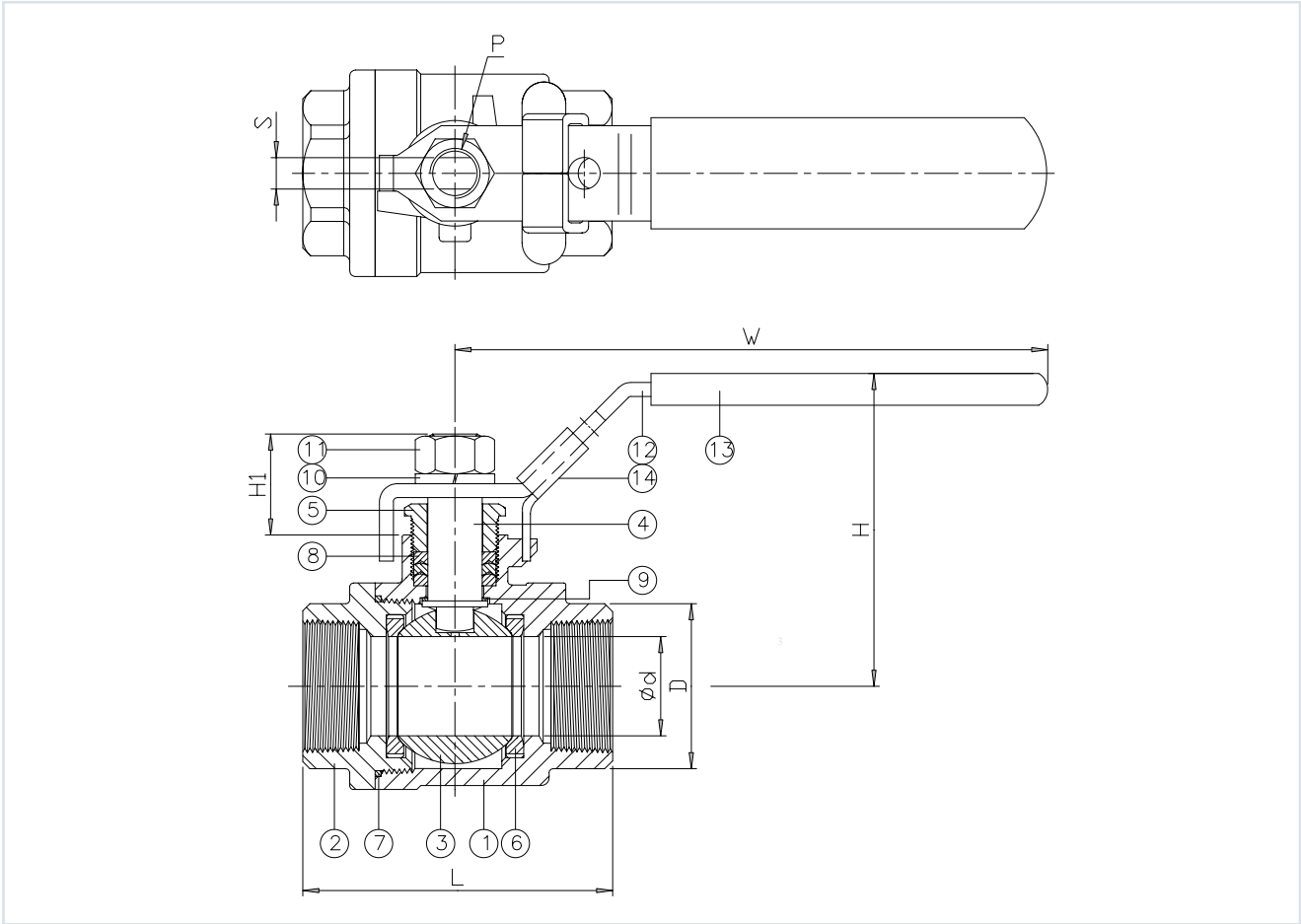
Seats: PEEK

Stem seal: PEEK

Lever: Stainless steel 1.4301 with plastic sleeve

➞ All information is non-binding!

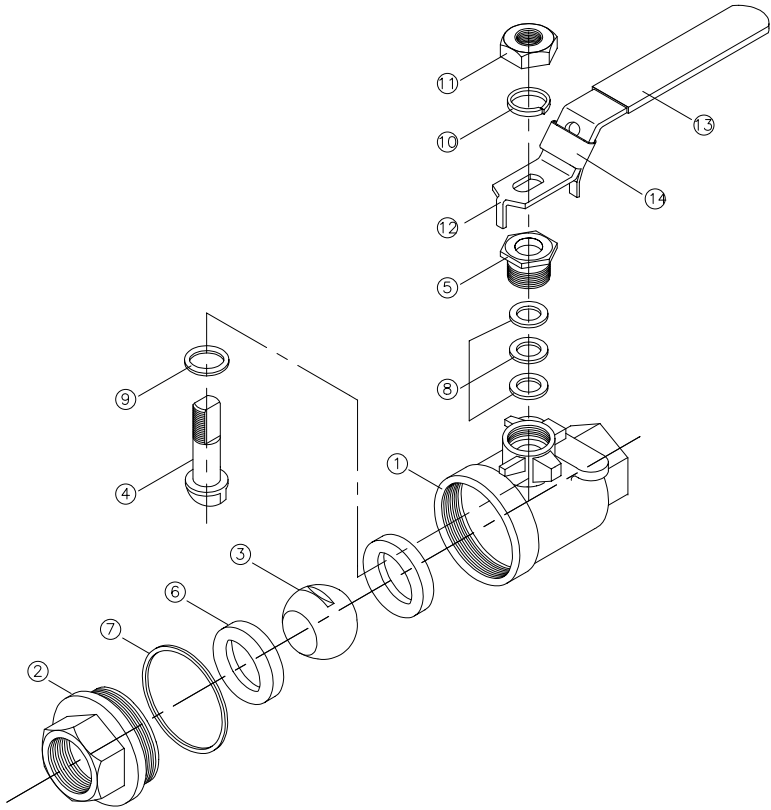
1/2"-2"



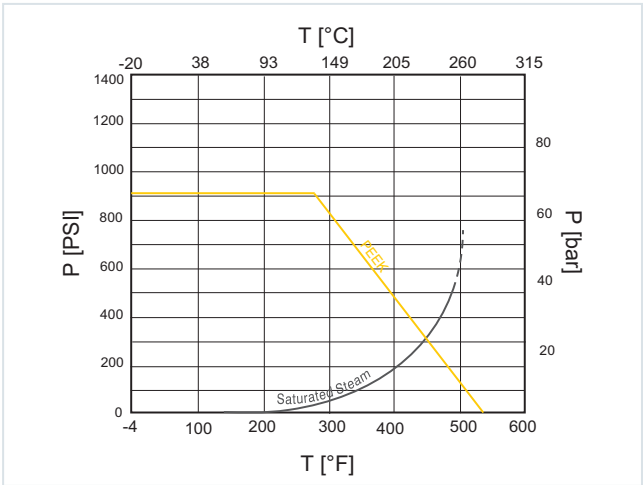
Dimensions in mm											
NPS	DN	d	D	L	H	H1	W	S	Breakaway Torque [Nm]	Weight [kg]	Kv value [m³/h]
1/2"	15	15	26,0	58,0	60,5	18,80	99,5	5,0	5,5	0,3	31
3/4"	20	20	32,0	65,6	63,0	23,40	123,0	6,5	7,5	0,5	58
1"	25	25	38,0	78,7	79,5	26,15	149,0	8,0	11,0	0,8	93
1 1/4"	32	32	48,0	90,0	86,0	23,60	149,0	8,0	15,0	1,1	158
1 1/2"	40	38	54,8	105,0	101,7	28,20	190,0	10,0	20,0	1,8	229
2"	50	50	67,0	124,0	109,3	28,20	190,0	10,0	40,0	2,7	415

Parts List

Pos.	Parts	Material
1	Body	1.4408
2	Cap	1.4408
3	Ball	ASTM A351-CF8M
4	Stem	ASTM A276-316
5	Gland	AISI 304
6	Seat	PEEK
7	Seal	PEEK
8	Packing	PEEK
9	Thrust Washer	PEEK
10	Spring Washer	AISI 304
11	Nut	AISI 304
12	Lever	1.4301
13	Sleeve	PVC
14	Locking Device	Stainless Steel



Pressure-Temperature Diagram



Contact

thyssenkrupp Schulte GmbH
 Subsidiary Das Armaturenzentrum
 Artur-Ladebeck-Str. 114
 33647 Bielefeld
 T: +49 521 1451-208
 daz.ts@thyssenkrupp.com
 www.dasarmaturenzentrum.de

Note:

Operation of the valve is only recommended in the area below the pressure-temperature curve and above the saturated steam curve in the diagram above. In case of deviating requirements, do not hesitate to contact us.

The valves described in this document, in the form we have supplied, are neither machines in accordance with Article 2 paragraph a nor incomplete machines according to Article 2 paragraph g in the sense of the Machinery Directive 2006/42 / EC.